











Worklist: 6098

<u>LAB CASE</u>	<u>ITEM</u>	<u>ITEM TYPE</u>	<u>DESCRIPTION</u>	
M2022-3109	1	BCK	AM 25/AM 26 Blood MultiDrug/THC Screen by LC-QQQ	
M2022-3141	1	BCK	AM 25/AM 26 Blood MultiDrug/THC Screen by LC-QQQ	
M2022-3174	1	BCK	AM 25/AM 26 Blood MultiDrug/THC Screen by LC-QQQ	
M2022-3175	1	BCK	AM 25/AM 26 Blood MultiDrug/THC Screen by LC-QQQ	
M2022-3195	1	BCK	AM 25/AM 26 Blood MultiDrug/THC Screen by LC-QQQ	
M2022-3299	1	BCK	AM 25/AM 26 Blood MultiDrug/THC Screen by LC-QQQ	
M2022-3541	2	BCK	AM 25/AM 26 Blood MultiDrug/THC Screen by LC-QQQ	
M2022-3561	2	BCK	AM 25/AM 26 Blood MultiDrug/THC Screen by LC-QQQ	
M2022-3600	2	BCK	AM 25/AM 26 Blood MultiDrug/THC Screen by LC-QQQ	
M2022-3617	2	BCK	AM 25/AM 26 Blood MultiDrug/THC Screen by LC-QQQ	
M2022-3631	3	BCK	AM 25/AM 26 Blood MultiDrug/THC Screen by LC-QQQ	
P2022-2113	2	BCK	AM 25 Blood Multi-Drug Screen by LC-QQQ	
P2022-2113	3	BCK	AM 25 Blood Multi-Drug Screen by LC-QQQ	
P2022-2113	4	BCK	AM 25 Blood Multi-Drug Screen by LC-QQQ	
P2022-2113	5	BCK	AM 25 Blood Multi-Drug Screen by LC-QQQ	
P2022-2113	6	BCK	AM 25 Blood Multi-Drug Screen by LC-QQQ	
P2022-2113	7	BCK	AM 25 Blood Multi-Drug Screen by LC-QQQ	
P2022-2382	1	BCK	AM 25/AM 26 Blood MultiDrug/THC Screen by LC-QQQ	
P2022-2644	1	BCK	AM 25/AM 26 Blood MultiDrug/THC Screen by LC-QQQ	
P2022-2667	1	BCK	AM 25/AM 26 Blood MultiDrug/THC Screen by LC-QQQ	
P2022-2673	1	BCK	AM 25/AM 26 Blood MultiDrug/THC Screen by LC-QQQ	

Worklist: 6098

CS

<u>LAB CASE</u>	<u>ITEM</u>	<u>ITEM TYPE</u>	<u>DESCRIPTION</u>	
P2022-2680	1	BCK	AM 25/AM 26 Blood MultiDrug/THC Screen by LC-QQQ	
P2022-2681	1	BCK	AM 25/AM 26 Blood MultiDrug/THC Screen by LC-QQQ	
P2022-2685	1	BCK	AM 25/AM 26 Blood MultiDrug/THC Screen by LC-QQQ	
P2022-2721	1	BCK	AM 25/AM 26 Blood MultiDrug/THC Screen by LC-QQQ	
P2022-2747	1	BCK	AM 25/AM 26 Blood MultiDrug/THC Screen by LC-QQQ	
P2022-2748	1	BCK	AM 25/AM 26 Blood MultiDrug/THC Screen by LC-QQQ	
P2022-2749	1	BCK	AM 25/AM 26 Blood MultiDrug/THC Screen by LC-QQQ	
P2022-2750	1	BCK	AM 25/AM 26 Blood MultiDrug/THC Screen by LC-QQQ	

AM# 25: Multi-Drug Screen in Blood and Urine by LC-MS/MS

Extraction Date: 09/07/2022

Plate lot#: 220805

Mobile phase A: 10mM Amm Form

Instant Buffer I

Blank Blood Lot: Lampire 22B52015-1

LCMS-QQQ ID: 069901

Analyst: Celena Shrum

Plate Retest Date: 02/05/2023

Mobile phase B: 0.1% Formic Acid in MeOH

Ethyl Acetate LC Methanol

Column: Phenomenex Phenyl Hexyl (4.6x50mm, 2.6um)

Pre-Analytic:

- 1. Check levels of mobile phases and needle wash refill as needed. Ensure waste is not full.
- 2. Ensure correct column is installed and begin mobile phase flow allow to equilibrate ~ 30 minutes.

Analytic:

- 1. Remove standards, plate, controls, and samples from cold storage. Allow to reach room temperature.
- 2. Using a calibrated pipette, pipette **250µL blood** into wells of analytical (standards) plate. **Pipette ID: 42**
- 3. Place on shaking incubator at ambient temp., 900rpm for 15 minutes. (SKIPPED PER DEVIATION)
- 4. Pipette **250µL 0.5 M ammonium hydroxide** in wells of analytical plate.
- 5. Place on shaking incubator at ambient temp., 900rpm for 15 minutes.
- 6. Transfer **200-450µL of blood+base and** mixture to corresponding wells of SLE+ plate.
Amount transferred: 300µl
- 7. Apply positive pressure for approx. 10-15 seconds (or until no liquid remains on top of sorbent).
(Load at 85-100 PSI- Selector to the right). Manifold ID: 067104
- 8. Wait 5 minutes.
- 9. Add **900uL ethyl acetate**.
- 10. Wait 5 minutes.
- 11. Apply positive pressure for approx. 15 seconds. *(10-15 PSI- Selector to the left).*
- 12. Add **900uL ethyl acetate**.
- 13. Wait 5 minutes.
- 14. Apply positive pressure for approx. 15 seconds. *(10-15 PSI- Selector to the left).*
- 15. Remove plate containing eluate.
- 16. Add 50µl of 1% HCl in MeOH to all wells in the run and place ACT cover on top of plate prior to drying.
- 17. Place on SPE Dry and evaporate to dryness at approx. 35°C.
- 18. Reconstitute in **100µL 20% LC MeOH** and heat seal plate with foil. Place in autosampler and run worklist.

Post-Analytic

- 1. Open quantitation software and create a new quantitation batch.
- 2. Make necessary changes to integration limits
- 3. Evaluate samples, S/N of primary transition >5 and S/N of secondary transition >3 or evaluation of peak symmetry and resolution. Within +/- 2% or 0.1 min RT of administrative control. Calculated concentration of 5 or greater or 2-5 for discretionary range.
- 4. Did all QCs pass for each analyte? If no, describe issue in comments (below).
- 5. Central File Packet to include: LIMS Worklist, Method Checklist, Calibration and Control Reports

COMMENTS:

**Idaho State Police
Forensic Services**

Request for Departure from an Analytical Method or Quality Standard

Deviation Number (assigned by QM): TOX-22-01

Date of Request: **2/3/2022**

Requestor/Discipline: Celena Shrum/Toxicology

Analytical Method/Quality Standard, Revision #: AM #25, AM #28, AM #29, Revision 13

Temporary or Permanent Deviation: Permanent

Scope of Deviation (record specific information, e.g. affected programs, evidence types, expected end date; etc): Deviation will remain in place until the change is made in the next method revision.

Deviation Request (Describe detailed instructions of the changes being made; include reference to specific section number(s) in the method manual): 4.1.4 (Place plate on shaking incubator at approximately 900 rpm for approximately 15 minutes) of AM #25, AM # 28, and AM #29 is being removed. The removal of this step was tested in the validation “Addition of Compounds/Modifications for the MDS” (approved on 2/2/2022) and it was determined that that step is not necessary and can be removed.

Technical Justification for Analytical Method Deviations: Refer to validation “Addition of Compounds/Modifications for the MDS” (approved on 2/2/2022)

Technical Review

Departure approved
Comments:

Departure Not Approved
Comments:

Approver: Rachel Cutler
Title: Laboratory Manager



Date: 2/10/2022

Quality Review

Quality Approver: Jason Crowe
Title: Quality Manager
Date: 2/10/2022



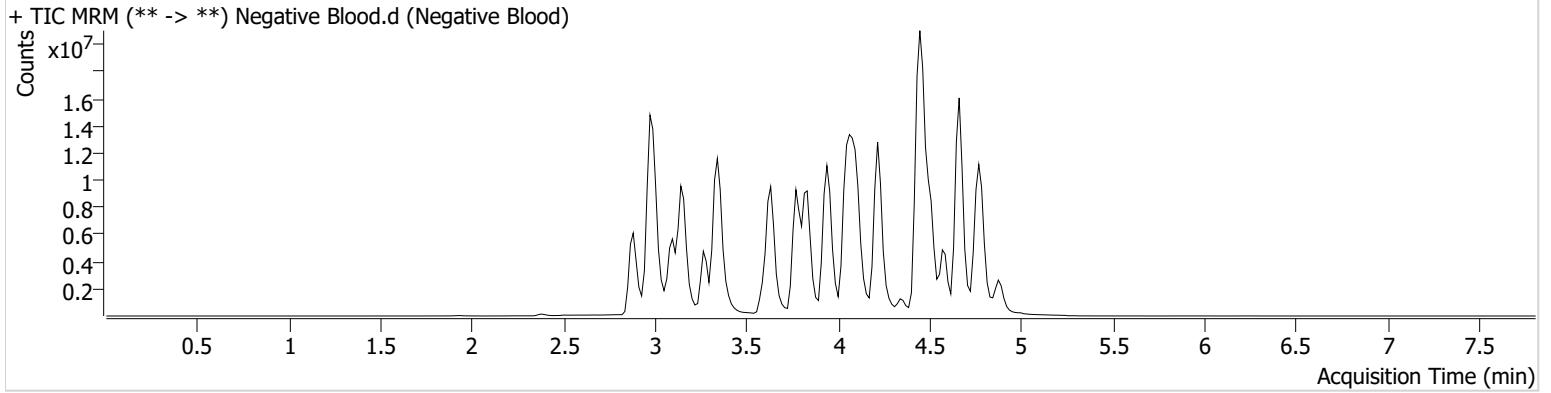
AM #25 Multi-Drug Screen Results



Batch results G:\TOX\Pocatello\Falco\2022\AM 25-26\090722 AM 25 26 CS SC\QuantResults\AM 25 CS.batch.bin
Calibration Last Update 9/8/2022 12:34:21 PM

Instrument	Falco (069901)	Data File	Negative Blood.d
Type	Sample	Sample	Negative Blood
Acq. Method	AM 25 MDS.m	Operator	Celena Shrum
Sample Position	P2-C1	Comment	
Injection Volume	5		
Acq. Date-Time	9/8/2022 4:06:29 AM		
Sample Info.			

Sample Chromatogram



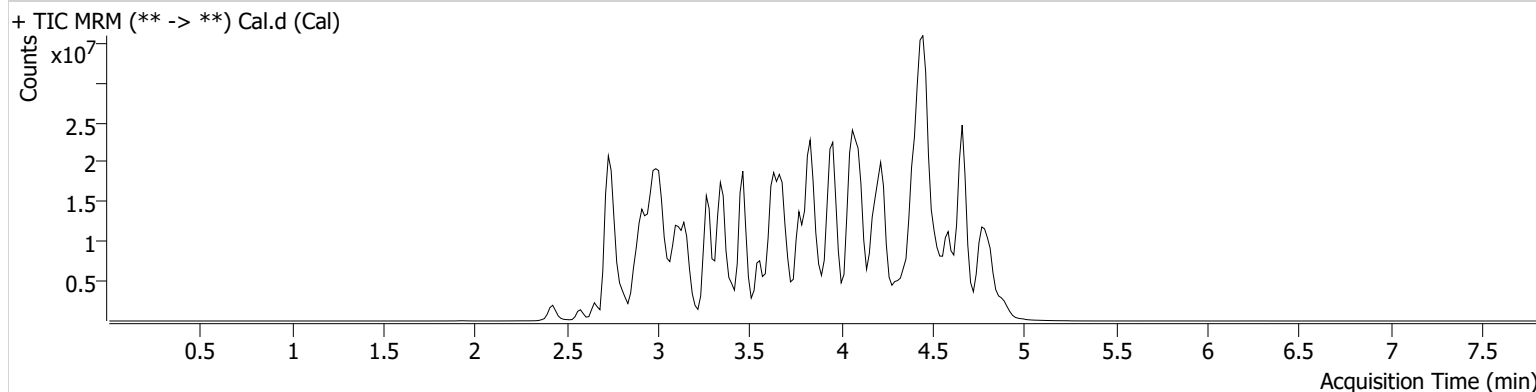
AM #25 Multi-Drug Screen Results



Batch results G:\TOX\Pocatello\Falco\2022\AM 25-26\090722 AM 25 26 CS SC\QuantResults\AM 25 CS.batch.bin
Calibration Last Update 9/8/2022 12:34:21 PM

Instrument	Falco (069901)	Data File	Cal.d
Type	Cal	Sample	Cal
Acq. Method	AM 25 MDS.m	Operator	Celena Shrum
Sample Position	P2-B1	Comment	
Injection Volume	5		
Acq. Date-Time	9/8/2022 3:57:55 AM		

Sample Chromatogram



Name	RT	Resp.	S/N	S/N	ISTD Resp.	Calc. Conc.
10-OH-Carbazepine	3.778	5747211	249.89	2140.57	27621493	10.0000
6-MAM	3.003	58978	22104.05	51875.42	1298295	10.0000
7-aminoclonazepam	3.605	1637074	662.77	866653.58	6361902	10.0000
7-aminoflunitrazepam	3.805	3135178	591.19	562.82	6361902	10.0000
9-Hydroxyrisperidone	3.951	13079453	2380.40	433.59	38460652	10.0000
Acetyl Fentanyl	4.002	812884	2191.94	427906.65	40270376	10.0000
Acetyl Norfentanyl	2.934	725290	4839.01	343.91	40270376	10.0000
a-hydroxyalprazolam	4.525	166204	21.43	56.58	6361902	10.0000
alpha-hydroxymidazolam	4.600	2639042	296.00	244.13	6361902	10.0000
Alpha-PHP	3.902	5562176	2249.77	10978.83	40270376	10.0000
alpha-PVP	3.626	6748816	520.34	445.32	19674579	10.0000
Alprazolam	4.636	2198310	1137.13	244.81	16900056	10.0000
Amitriptyline	4.470	2961331	424.08	220.62	11170417	10.0000
Amphetamine	2.923	7614798	4524.28	2547.76	19674579	10.0000
Benzoyllecgonine	3.405	396622	224.13	14.18	610112	10.0000
Brompheniramine	4.064	196234	225.96	1217.57	53729609	10.0000
Buprenorphine	4.903	1556544	847169.79	143502.21	5475168	10.0000
Bupropion	3.856	8626786	798.51	718.30	26115471	10.0000
Carbamazepine	4.242	13681292	2748.39	1339.39	427054	10.0000
Carisoprodol	4.225	1955559	1004.16	75.98	7721434	10.0000
Chlordiazepoxide	4.745	923021	198.84	3069.55	16900056	10.0000
Chlorpheniramine	3.976	13662318	9306.14	52.22	53729609	10.0000
Chlorpromazine	4.665	4784464	493.53	2720290.43	19487864	10.0000
Citalopram	4.094	5893688	973.04	813255.38	53729609	10.0000
Clomipramine	4.665	7324615	11938.73	40925.95	53729609	10.0000
Clonazepam	4.450	617651	314.78	41789.67	16900056	10.0000
Clonazolam	4.385	1655183	1540.38	347087.20	16900056	10.0000
Clozapine	4.447	6506865	781.97	37629.83	21399884	10.0000
Cocaehtylene	3.833	8048992	4956751.76	2104.24	30304011	10.0000
Cocaine	3.635	7004385	6313.76	615.96	30304011	10.0000
Codeine	2.930	674132	4697.50	2054.42	15544799	10.0000
Cyclobenzaprine	4.393	5739002	773.26	∞	11170417	10.0000
Desipramine	4.394	12481793	13331.67	214.54	11170417	10.0000
Dextromethorphan	4.116	3835096	304.92	523.72	19844744	10.0000

Cal

AM #25 Multi-Drug Screen Results



Name	RT	Resp.	S/N	S/N	ISTD Resp.	Calc. Conc.
Dextrorphan	3.408	4521410	2740.03	105079.55	19844744	10.0000
Diazepam	4.853	1363341	633.42	509.22	16900056	10.0000
Dihydrocodeine	2.822	1906313	1210.14	352.95	15544799	10.0000
Diphenhydramine	4.071	18821897	1174.72	852.37	53729609	10.0000
Doxepin	4.192	4327563	455.22	88.85	36483942	10.0000
Doxylamine	3.683	20990833	11479.88	58498.98	19844744	10.0000
Duloxetine	4.345	145527	67772.56	3945.64	2308063	10.0000
EDDP	4.115	462500	756.23	61.21	1142507	10.0000
Estazolam	4.545	7033273	400.52	1191.66	16900056	10.0000
Etizolam	4.646	371447	408873.46	2932770.07	16900056	10.0000
Fentanyl	4.232	609020	729.33	162.93	30182239	10.0000
Flualprazolam	4.494	1045338	530.68	436013.18	16900056	10.0000
Flunitrazepam	4.558	1959240	431.14	716.48	16900056	10.0000
Fluoxetine	4.343	6375775	1207.68	624.85	9630307	10.0000
Flurazepam	4.306	5702918	4051822.55	7676.81	16900056	10.0000
Hydrocodone	3.128	2590872	841.22	700.12	15544799	10.0000
Hydromorphone	2.581	2047948	126526.75	3294.31	394356	10.0000
Hydroxyzine	4.583	6335127	1567.59	1240.91	53729609	10.0000
Imipramine	4.423	10679254	662.62	1555.02	11170417	10.0000
Ketamine	3.717	7222274	1033.43	305.12	16766623	10.0000
Lamotrigine	3.639	432157	5801.42	303958.22	53729609	10.0000
Levamisole	3.058	5099640	31325.44	330.28	30304011	10.0000
Levetiracetam	2.662	2038397	666.82	1030.41	53729609	10.0000
Lorazepam	4.449	307735	132.91	61.19	16900056	10.0000
Maprotiline	4.470	1862429	805.86	134.12	11170417	10.0000
MDA	3.028	4758698	361.38	77.37	37590649	10.0000
MDEA	3.257	7327647	7039.57	1929.82	37590649	10.0000
MDMA	3.120	10812453	826.16	771.73	37590649	10.0000
Meperidine	3.655	4339234	352.04	18837.92	19844744	10.0000
Meprobamate	3.673	1282771	17389.82	129.86	7721434	10.0000
Methadone	4.420	11891571	818.61	708.49	1142507	10.0000
Methamphetamine	3.030	12151954	2916.12	745.07	37590649	10.0000
Methocarbamol	3.578	475485	830.81	58.95	1142507	10.0000
Methylphenidate	3.564	16972876	845.06	1037.72	28035801	10.0000
Metoprolol	3.468	1407227	479.47	633.66	19844744	10.0000
Midazolam	4.786	987074	440.68	566.04	16900056	10.0000
Mirtazapine	4.194	5998405	2130.87	37340.18	19844744	10.0000
Mitragynine	4.306	1052100	1238510.29	1591248.51	19844744	10.0000
Morphine	2.414	508534	5.17	1287.55	394356	10.0000
Norbuprenorphine	3.859	152383	132772.35	53414.02	5475168	10.0000
Nordiazepam	4.701	1452598	6874.50	389.52	16900056	10.0000
Norfentanyl	3.364	12743969	14871.68	122.11	40270376	10.0000
Norhydrocodone	2.962	153227	57.54	57.73	394356	10.0000
Norketamine	3.826	1188119	340.62	2656.67	16766623	10.0000
Normeperidine	3.626	3181890	259.69	376.34	53729609	10.0000
Noroxycodone	2.914	2719682	∞	139.97	16766623	10.0000
Nortriptyline	4.441	2529851	435.62	540.69	11170417	10.0000
O-desmethyl-tramadol	2.948	16234303	581.08	498.85	53729609	10.0000
O-desmethylvenlafaxine	3.284	3001216	421.92	∞	13322562	10.0000
Olanzapine	3.926	1672105	986.61	378.10	427054	10.0000
Oxazepam	4.515	1976200	1810.68	452.51	11547771	10.0000
Oxycodone	2.989	3716453	376.52	1210.34	16766623	10.0000
Oxymorphone	2.426	3656654	∞	300.55	394356	10.0000
Paroxetine	4.355	759353	322.23	254819.26	9630307	10.0000
Phenazepam	4.646	1298126	771.42	174522.05	16900056	10.0000
Phencyclidine	3.963	10635567	10479.80	1271.42	19844744	10.0000
Phentermine	3.183	2768877	188.74	42.67	28035801	10.0000
Phenytoin	4.133	825891	735.17	375.20	427054	10.0000
Primidone	3.488	2285205	197635.19	257.59	427054	10.0000
Promethazine	4.407	16094157	77641.22	1187.82	53729609	10.0000

Cal

AM #25 Multi-Drug Screen Results



Name	RT	Resp.	S/N	S/N	ISTD Resp.	Calc. Conc.
Pseudoephedrine	2.738	61100010	693.91	1395.25	37590649	10.0000
Quetiapine	4.629	7813423	3543.59	4158705.85	43169879	10.0000
Risperidone	4.167	12288556	21818.39	7329.06	38460652	10.0000
Sertraline	4.590	1952978	28834.00	34474.68	9630307	10.0000
Sufentanil	4.629	567719	299222.85	432.14	40270376	10.0000
Tapentadol	3.473	9403058	696.02	3032.04	16766623	10.0000
Temazepam	4.683	3964789	492.00	232.14	16900056	10.0000
Topiramate	3.847	59036	13955.26	62198.87	289456	10.0000
Tramadol	3.469	33320079	∞	82.50	53729609	10.0000
Trazodone	4.813	11691501	17654.00	910.66	36483942	10.0000
Venlafaxine	3.821	13361580	1844.40	452.72	9630307	10.0000
Zaleplon	4.360	2470530	716.12	519.77	43169879	10.0000
Zolpidem	4.467	14100751	20550.70	3510.16	43169879	10.0000
Zopiclone	4.367	33602	74.34	2512.66	160850	10.0000

AM# 26: Screening of THC and Metabolites in Blood and Urine by LC-MS/MS

Extraction Date: 09/07/2022

Plate lot#: 220309

Mobile phase A: 10mM Amm Form

Blank Blood Lot: Lampire 22B52015-1

LCMS-QQQ ID: 069901

Analyst: Celena Shrum

Plate Retest Date: 09/09/2022

Mobile phase B: 0.1% Formic Acid in MeOH

Column: Phenomenex Phenyl Hexyl (4.6x50mm, 2.6um)

Pre-Analytic:

- 1. Check levels of mobile phases and needle wash refill as needed. Ensure waste is not full.
- 2. Ensure correct column is installed and begin mobile phase flow allow to equilibrate ~ 30 minutes.

Analytic:

- 1. Remove standards, plate, controls, and samples from cold storage. Allow to reach room temperature.
- 2. Using a calibrated pipette, add **1000µl blood (calibrated pipette)** into the appropriate wells of analytical (standards) plate. **Pipette ID: #42**
- 3. Place on shaking incubator at ambient temp., 900rpm for 15 minutes.
- 4. Pipette **500µL 0.1% formic acid in water blood sample** of analytical plate.
- 5. Place on shaking incubator at ambient temp., 900rpm for 15 minutes.
- 6. Transfer **800µL of blood+acid** mixture to corresponding wells of SLE+ plate.
- 7. Apply positive pressure for approx. 10-15 seconds (or until no liquid remains on top of sorbent).
(Load at 85-100 PSI- Selector to the right) Manifold ID: 067104
- 8. Wait 5 minutes.
- 9. Add **2.25mL MTBE. (Add in 3 increments of 750uL)**
- 10. Wait 5 minutes.
- 11. Apply positive pressure for approx. 15 seconds. **(10-15 PSI- Selector to the left).**
- 12. Add **2.25mL Hexane. (Add in 3 increments of 750uL)**
- 13. Wait 5 minutes.
- 14. Apply positive pressure for approx. 15 seconds. **(10-15 PSI- Selector to the left).**
- 15. Remove plate containing eluate. Place on SPE Dry and evaporate to dryness at approx. 35°C.
SPE Dry ID: 067103
- 16. Reconstitute in **100µL 100% MeOH** and heat seal plate with foil. Place in autosampler and run worklist.

Post-Analytic

- 1. Create batch and process data.
- 2. Make any necessary integration changes, R² values ≥0.98 for each analyte
- 3. RT +/- 2% or 0.100 min, whichever is greater
- 4. Confirmation testing on case samples with a response for THC and OH-THC of 3ng/mL or greater and/or Carboxy-THC at 10ng/mL or greater (analyst discretion between 5-10ng/mL) may be pursued.
- 5. Did all QCs pass for each analyte? (if not, describe in comments section)
- 6. Central File Packet to include: LIMS Worklist, Method Checklist, Calibration and Control Reports

COMMENTS: P2022-2673-1 and P2022-2680-1 were reinjected due to low ISTD responses

	1	2	3	4	5	6
a	cal 1ng	QC 2	M2022-3541-2	P2022-2673-1	P2022-2750-1	
b	cal 3 ng	Blood NC	M2022-3561-2	P2022-2680-1		
c	cal 5 ng	M2022-3109-1	M2022-3600-2	P2022-2681-1		
d	cal 10ng	M2022-3141-1	M2022-3617-2	P2022-2685-1		
e	cal 25 ng	M2022-3174-1	M2022-3631-3	P2022-2721-1		
f	cal 50 ng	M2022-3175-1	P2022-2382-1	P2022-2747-1		
g	cal 100 ng	M2022-3195-1	P2022-2644-1	P2022-2748-1		
h	QC 1	M2022-3299-1	P2022-2667-1	P2022-2749-1		

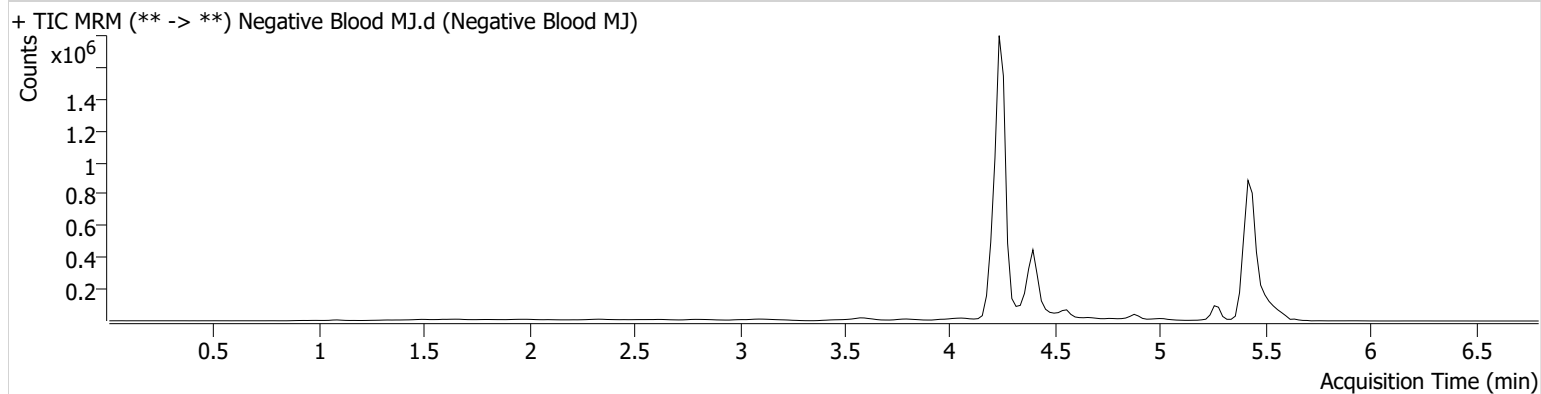
AM #26 Cannabinoids Screen Results



Batch results G:\TOX\Pocatello\Falco\2022\AM 25-26\090722 AM 25 26 CS SC\QuantResults\AM 26 CS.batch.bin
Calibration Last Update 9/8/2022 10:35:26 AM

Instrument	Falco (069901)	Data File	Negative Blood MJ.d
Type	Sample	Sample	Negative Blood MJ
Acq. Method	AM 26 THC.m	Operator	Celena Shrum
Sample Position	P1-B2	Comment	
Injection Volume	10		
Acq. Date-Time	9/8/2022 12:05:11 AM		
Sample Info.			

Sample Chromatogram



CS

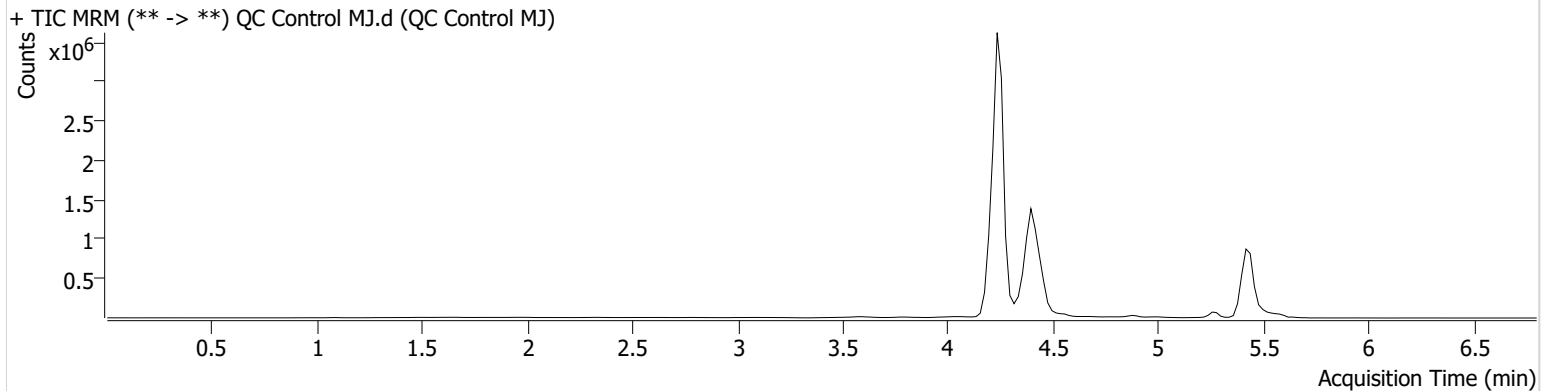


AM #26 Cannabinoids Screen Results

Batch results G:\TOX\Pocatello\Falco\2022\AM 25-26\090722 AM 25 26 CS SC\QuantResults\AM 26 CS.batch.bin
Calibration Last Update 9/8/2022 10:35:26 AM

Instrument	Falco (069901)	Data File	QC Control MJ.d
Type	QC	Sample	QC Control MJ
Acq. Method	AM 26 THC.m	Operator	Celena Shrum
Sample Position	P1-H1	Comment	
Injection Volume	10		
Acq. Date-Time	9/7/2022 11:50:00 PM		

Sample Chromatogram



Name	RT	Resp.	ISTD Resp.	Final Conc.
THC	5.449	8566	232366	5.0481 ng/ml
THC-COOH	4.436	764269	4417415	14.6690 ng/ml
THC-OH	4.262	91986	12793871	4.6041 ng/ml

AM #26 Cannabinoids Screen Results

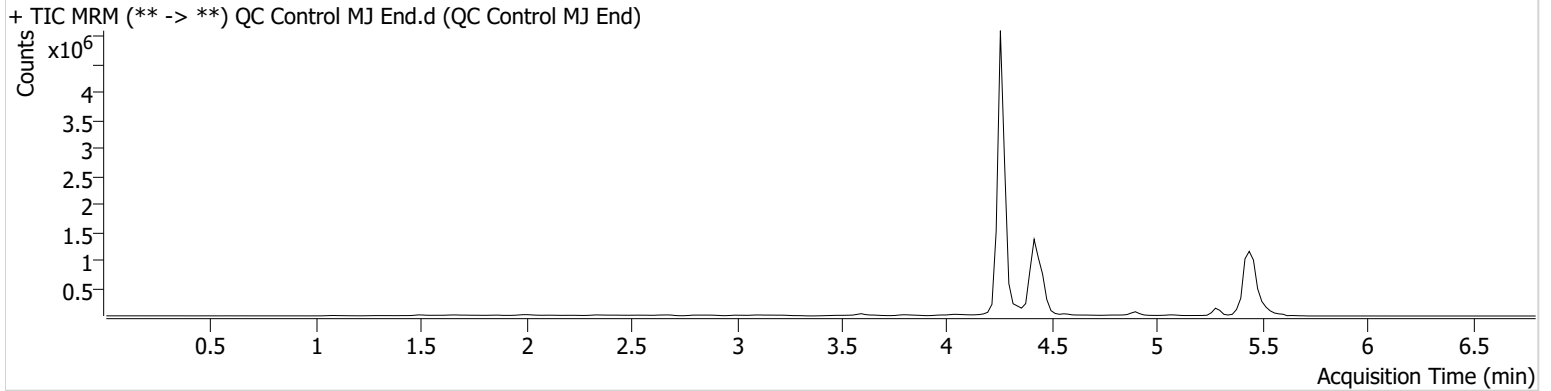


Batch results G:\TOX\Pocatello\Falco\2022\AM 25-26\090722 AM 25 26 CS SC\QuantResults\AM 26 CS.batch.bin
Calibration Last Update 9/8/2022 10:35:26 AM

Instrument	Falco (069901)	Data File	QC Control MJ End.d
Type	QC	Sample	QC Control MJ End
Acq. Method	AM 26 THC.m	Operator	Celena Shrum
Sample Position	P1-A2	Comment	
Injection Volume	10		
Acq. Date-Time	9/8/2022 3:06:52 AM		

Sample Info.

Sample Chromatogram



Name	RT	Resp.	ISTD Resp.	Final Conc.
THC	5.409	12086	327605	5.0516 ng/ml
THC-COOH	4.456	584286	3515164	14.0449 ng/ml
THC-OH	4.262	85393	11302714	4.8303 ng/ml

CS

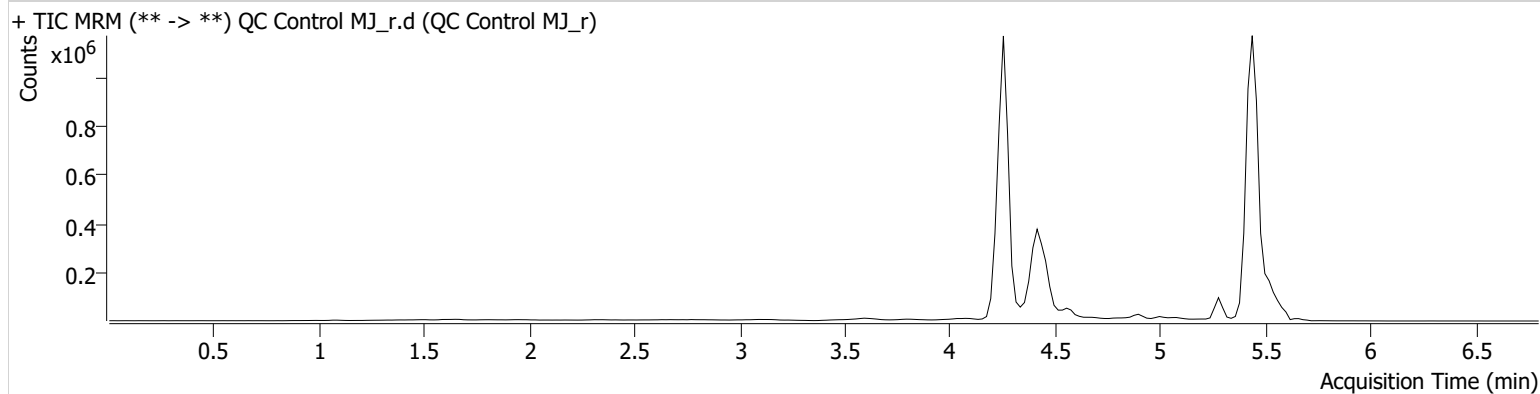


AM #26 Cannabinoids Screen Results

Batch results G:\TOX\Pocatello\Falco\2022\AM 25-26\090722 AM 25 26 CS SC\QuantResults\AM 26 CS.batch.bin
Calibration Last Update 9/8/2022 10:35:26 AM

Instrument	Falco (069901)	Data File	QC Control MJ_r.d
Type	QC	Sample	QC Control MJ_r
Acq. Method	AM 26 THC.m	Operator	Celena Shrum
Sample Position	P1-H1	Comment	
Injection Volume	10		
Acq. Date-Time	9/8/2022 9:51:42 AM		

Sample Chromatogram



Name	RT	Resp.	ISTD Resp.	Final Conc.
THC	5.469	14638	388377	5.1545 ng/ml
THC-COOH	4.456	254967	1140720	19.3085 ng/ml
THC-OH	4.262	27681	3836687	4.6195 ng/ml

AM #26 Cannabinoids Screen Results

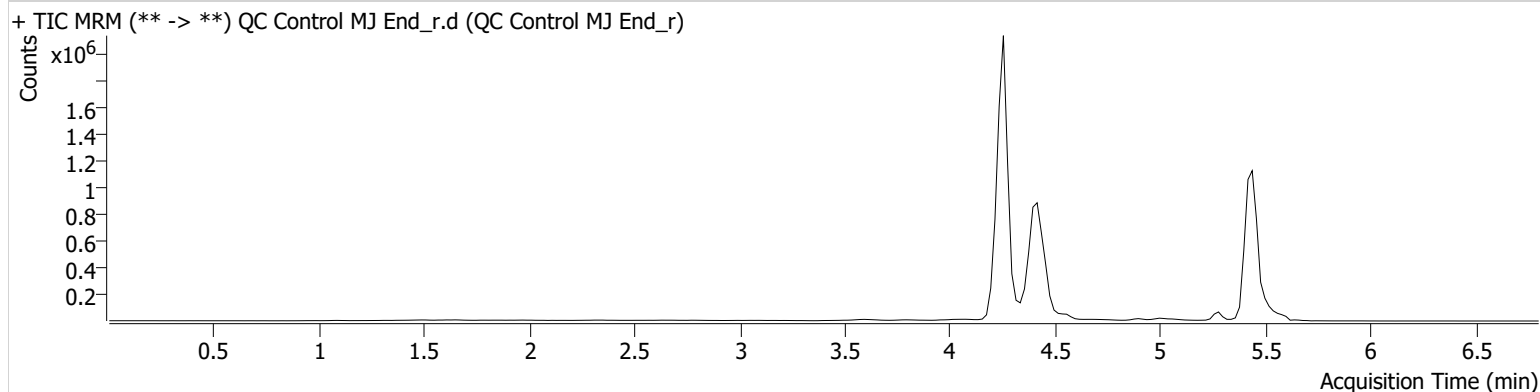


Batch results G:\TOX\Pocatello\Falco\2022\AM 25-26\090722 AM 25 26 CS SC\QuantResults\AM 26 CS.batch.bin
Calibration Last Update 9/8/2022 10:35:26 AM

Instrument	Falco (069901)	Data File	QC Control MJ End_r.d
Type	QC	Sample	QC Control MJ End_r
Acq. Method	AM 26 THC.m	Operator	Celena Shrum
Sample Position	P1-A2	Comment	
Injection Volume	10		
Acq. Date-Time	9/8/2022 10:14:38 AM		

Sample Info.

Sample Chromatogram

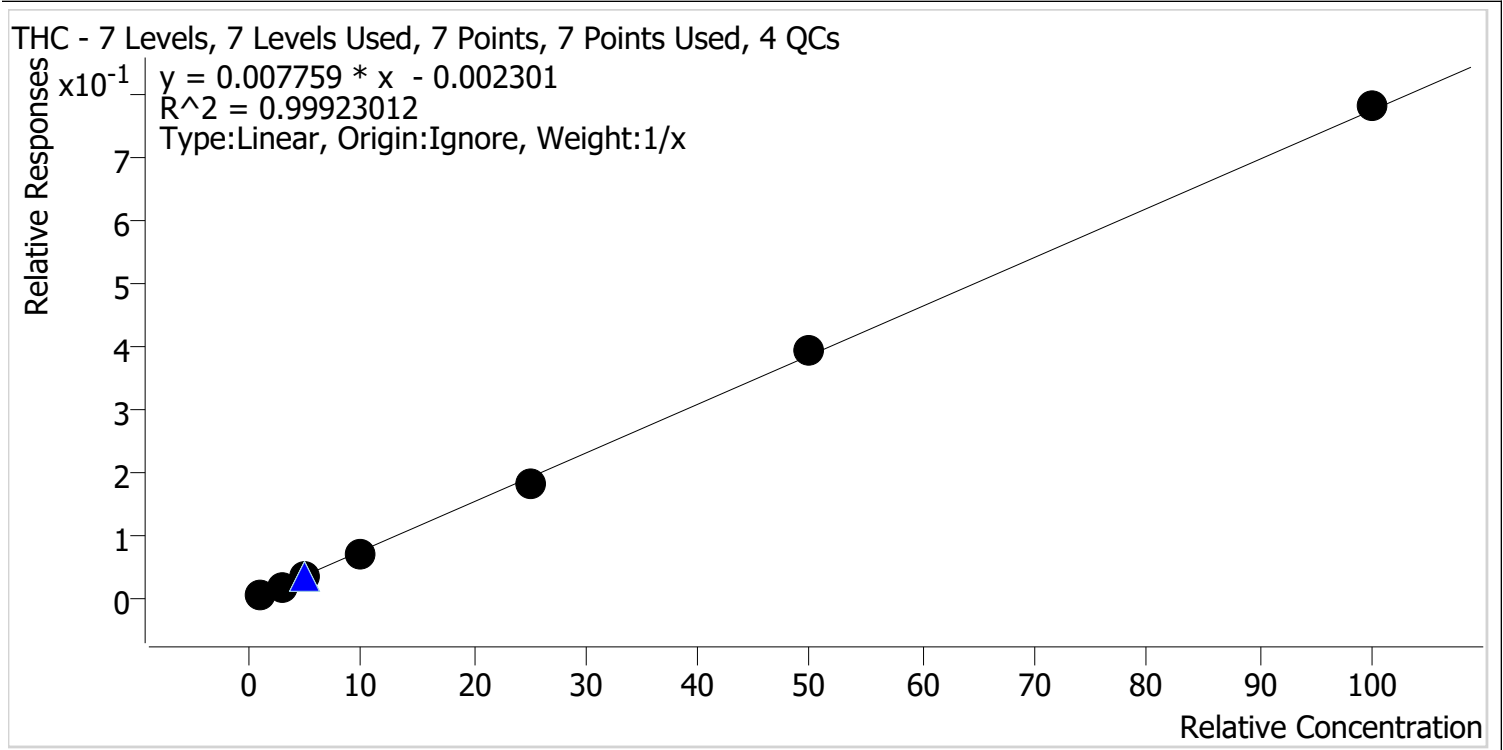


Name	RT	Resp.	ISTD Resp.	Final Conc.
THC	5.469	13964	377116	5.0693 ng/ml
THC-COOH	4.436	544924	2805555	16.6182 ng/ml
THC-OH	4.262	54514	7047010	4.9422 ng/ml



AM #28 Multi-Drug Quant. Calibration Curve Report

Batch results G:\TOX\Pocatello\Falco\2022\AM 25-26\090722 AM 25 26 CS SC\QuantResults\AM 26 CS.batch.bin
Last Cal. Update 9/8/2022 10:35 AM
Analyst Name ISP\cshrum
Analyte THC **Internal Standard** THC-D3



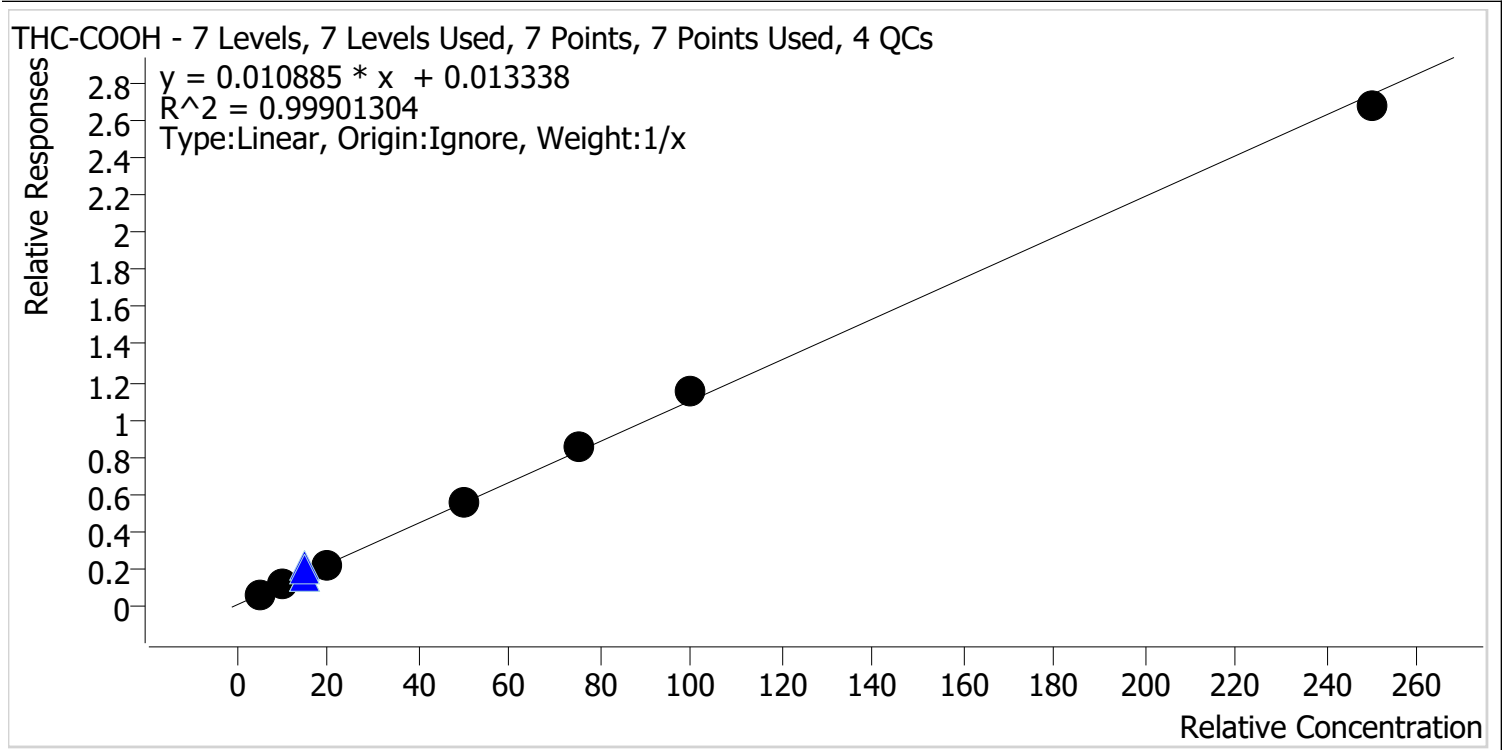
Sample	Level	Enabled	Expected Concentration	Final Concentration	Accuracy
Cal 1 MJ	1	✓	1.0	1.1	114.0
Cal 2 MJ	2	✓	3.0	2.8	92.8
Cal 3 MJ	3	✓	5.0	5.0	100.8
Cal 4 MJ	4	✓	10.0	9.4	93.7
Cal 5 MJ	5	✓	25.0	24.1	96.3
Cal 6 MJ	6	✓	50.0	50.8	101.5
Cal 7 MJ	7	✓	100.0	100.8	100.8

CS



AM #28 Multi-Drug Quant. Calibration Curve Report

Batch results G:\TOX\Pocatello\Falco\2022\AM 25-26\090722 AM 25 26 CS SC\QuantResults\AM 26 CS.batch.bin
Last Cal. Update 9/8/2022 10:35 AM
Analyst Name ISP\cshrum
Analyte THC-COOH **Internal Standard** THC-COOH-D9



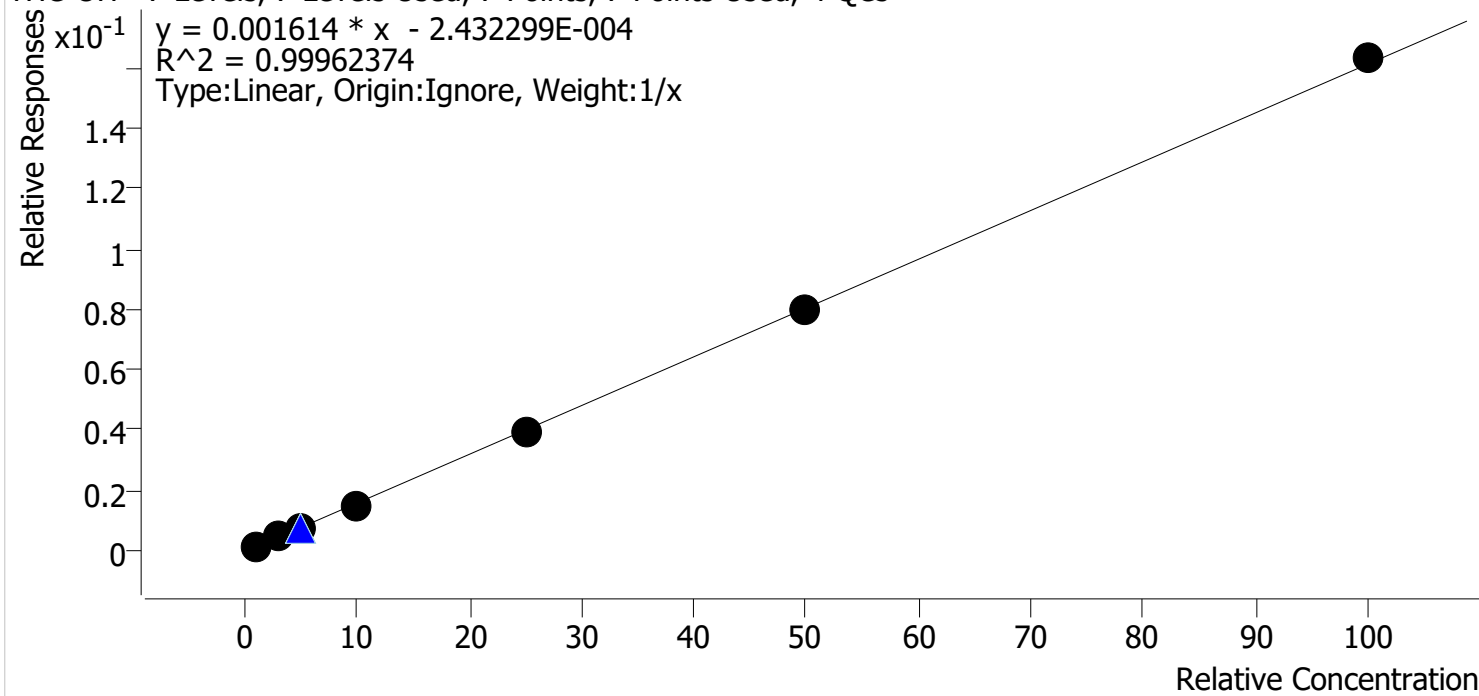
Sample	Level	Enabled	Expected Concentration	Final Concentration	Accuracy
Cal 1 MJ	1	✓	5.0	5.1	101.1
Cal 2 MJ	2	✓	10.0	9.4	94.2
Cal 3 MJ	3	✓	20.0	19.8	99.0
Cal 4 MJ	4	✓	50.0	50.9	101.8
Cal 5 MJ	5	✓	75.0	76.9	102.6
Cal 6 MJ	6	✓	100.0	103.8	103.8
Cal 7 MJ	7	✓	250.0	244.1	97.7



AM #28 Multi-Drug Quant. Calibration Curve Report

Batch results G:\TOX\Pocatello\Falco\2022\AM 25-26\090722 AM 25 26 CS SC\QuantResults\AM 26 CS.batch.bin
Last Cal. Update 9/8/2022 10:35 AM
Analyst Name ISP\cshrum
Analyte THC-OH **Internal Standard** THC-OH-D3

THC-OH - 7 Levels, 7 Levels Used, 7 Points, 7 Points Used, 4 QCs



Sample	Level	Enabled	Expected Concentration	Final Concentration	Accuracy
Cal 1 MJ	1	✓	1.0	1.1	111.6
Cal 2 MJ	2	✓	3.0	2.9	97.5
Cal 3 MJ	3	✓	5.0	4.8	95.1
Cal 4 MJ	4	✓	10.0	9.7	97.2
Cal 5 MJ	5	✓	25.0	24.4	97.7
Cal 6 MJ	6	✓	50.0	49.9	99.8
Cal 7 MJ	7	✓	100.0	101.2	101.2

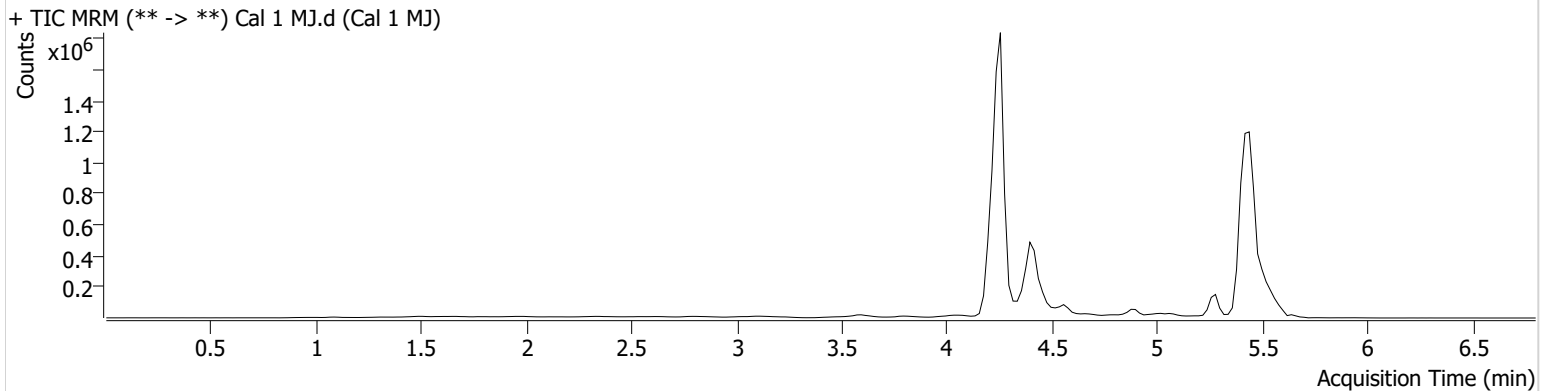
AM #26 Cannabinoids Screen Results



Batch results G:\TOX\Pocatello\Falco\2022\AM 25-26\090722 AM 25 26 CS SC\QuantResults\AM 26 CS.batch.bin
Calibration Last Update 9/8/2022 10:35:26 AM

Instrument	Falco (069901)	Data File	Cal 1 MJ.d
Type	Cal	Sample	Cal 1 MJ
Acq. Method	AM 26 THC.m	Operator	Celena Shrum
Sample Position	P1-A1	Comment	
Injection Volume	10		
Acq. Date-Time	9/7/2022 10:56:53 PM		

Sample Chromatogram



Name	RT	Resp.	ISTD Resp.	Final Conc.	
THC	5.469	3628	554452	1.1399 ng/ml	Low
THC-COOH	4.436	112906	1652173	5.0527 ng/ml	
THC-OH	4.262	10883	6984154	1.1158 ng/ml	Low

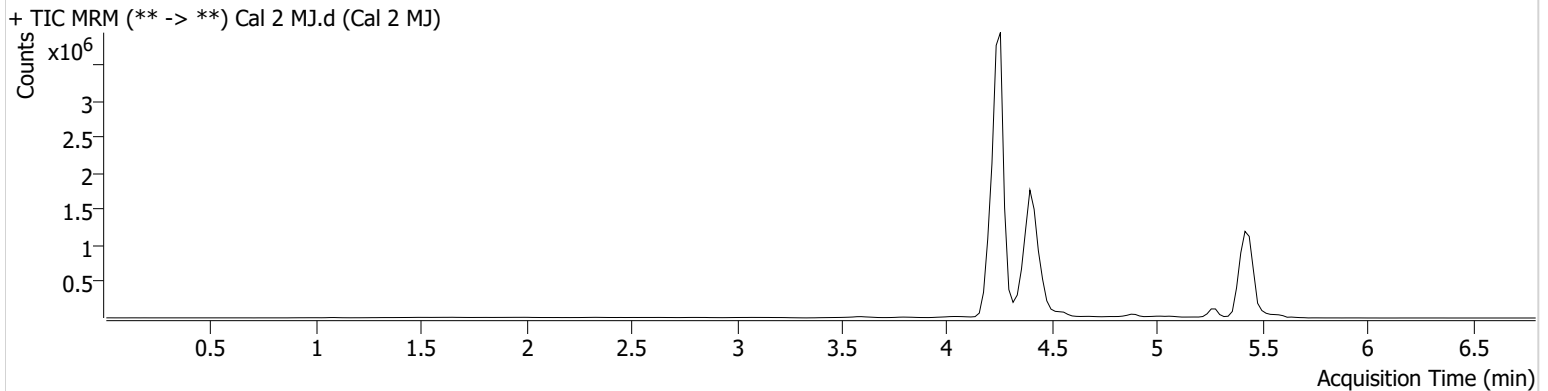
AM #26 Cannabinoids Screen Results



Batch results G:\TOX\Pocatello\Falco\2022\AM 25-26\090722 AM 25 26 CS SC\QuantResults\AM 26 CS.batch.bin
Calibration Last Update 9/8/2022 10:35:26 AM

Instrument	Falco (069901)	Data File	Cal 2 MJ.d
Type	Cal	Sample	Cal 2 MJ
Acq. Method	AM 26 THC.m	Operator	Celena Shrum
Sample Position	P1-B1	Comment	
Injection Volume	10		
Acq. Date-Time	9/7/2022 11:04:36 PM		

Sample Chromatogram



Name	RT	Resp.	ISTD Resp.	Final Conc.	
THC	5.469	11328	586682	2.7852 ng/ml	Low
THC-COOH	4.436	705402	6089315	9.4169 ng/ml	
THC-OH	4.262	67497	15069196	2.9250 ng/ml	Low

CS

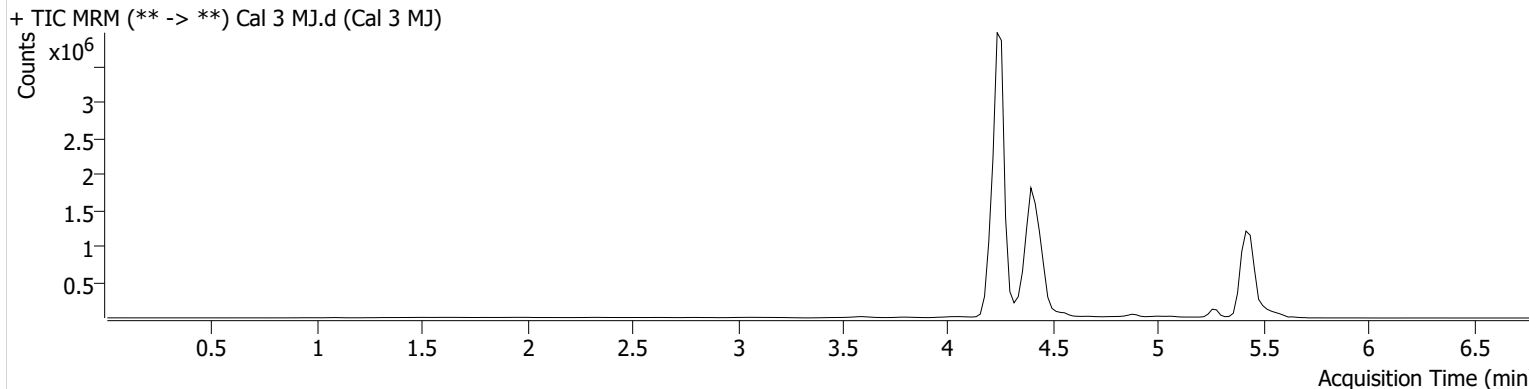


AM #26 Cannabinoids Screen Results

Batch results G:\TOX\Pocatello\Falco\2022\AM 25-26\090722 AM 25 26 CS SC\QuantResults\AM 26 CS.batch.bin
Calibration Last Update 9/8/2022 10:35:26 AM

Instrument	Falco (069901)	Data File	Cal 3 MJ.d
Type	Cal	Sample	Cal 3 MJ
Acq. Method	AM 26 THC.m	Operator	Celena Shrum
Sample Position	P1-C1	Comment	
Injection Volume	10		
Acq. Date-Time	9/7/2022 11:12:11 PM		

Sample Chromatogram



Name	RT	Resp.	ISTD Resp.	Final Conc.
THC	5.449	15477	420650	5.0390 ng/ml
THC-COOH	4.436	1259684	5503685	19.8015 ng/ml
THC-OH	4.262	108394	14585506	4.7539 ng/ml

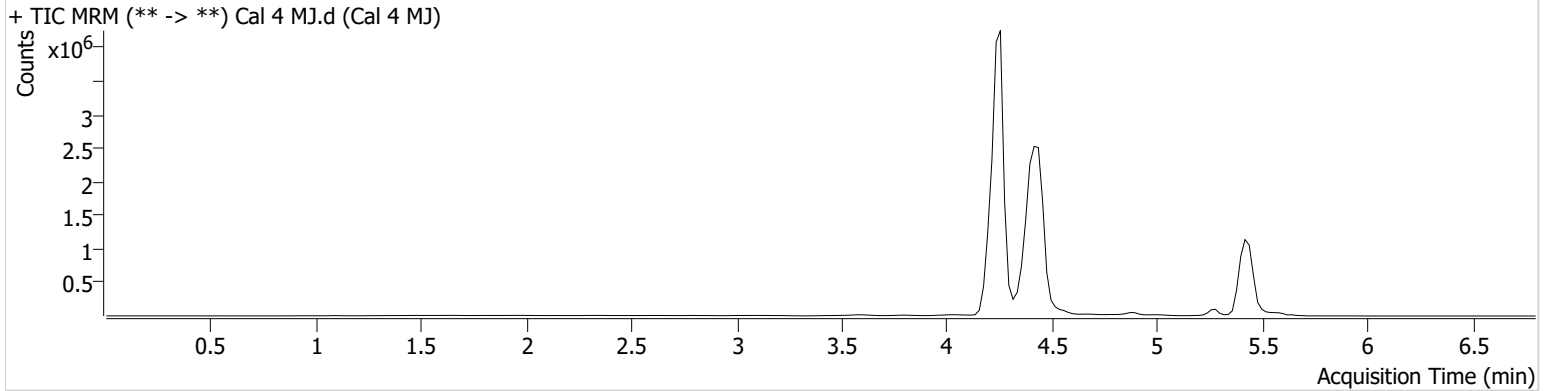
AM #26 Cannabinoids Screen Results



Batch results G:\TOX\Pocatello\Falco\2022\AM 25-26\090722 AM 25 26 CS SC\QuantResults\AM 26 CS.batch.bin
Calibration Last Update 9/8/2022 10:35:26 AM

Instrument	Falco (069901)	Data File	Cal 4 MJ.d
Type	Cal	Sample	Cal 4 MJ
Acq. Method	AM 26 THC.m	Operator	Celena Shrum
Sample Position	P1-D1	Comment	
Injection Volume	10		
Acq. Date-Time	9/7/2022 11:19:45 PM		
Sample Info.			

Sample Chromatogram



Name	RT	Resp.	ISTD Resp.	Final Conc.
THC	5.449	39664	563225	9.3733 ng/ml
THC-COOH	4.436	3184898	5615425	50.8796 ng/ml
THC-OH	4.262	233163	15098737	9.7159 ng/ml

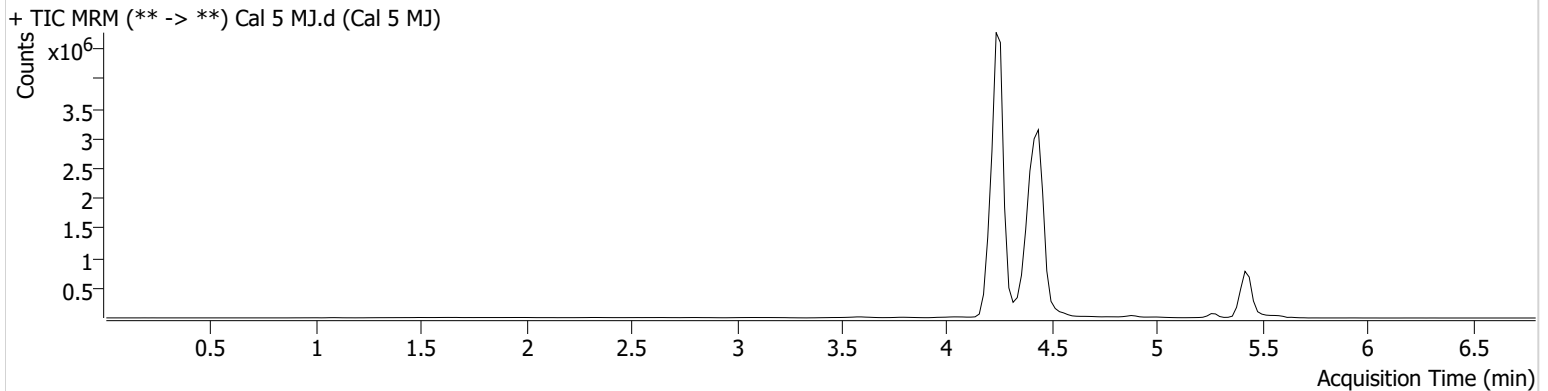
AM #26 Cannabinoids Screen Results



Batch results G:\TOX\Pocatello\Falco\2022\AM 25-26\090722 AM 25 26 CS SC\QuantResults\AM 26 CS.batch.bin
Calibration Last Update 9/8/2022 10:35:26 AM

Instrument	Falco (069901)	Data File	Cal 5 MJ.d
Type	Cal	Sample	Cal 5 MJ
Acq. Method	AM 26 THC.m	Operator	Celena Shrum
Sample Position	P1-E1	Comment	
Injection Volume	10		
Acq. Date-Time	9/7/2022 11:27:18 PM		

Sample Chromatogram



Name	RT	Resp.	ISTD Resp.	Final Conc.
THC	5.449	53521	290106	24.0749 ng/ml
THC-COOH	4.436	4342825	5104583	76.9334 ng/ml
THC-OH	4.262	562002	14335500	24.4335 ng/ml

CS

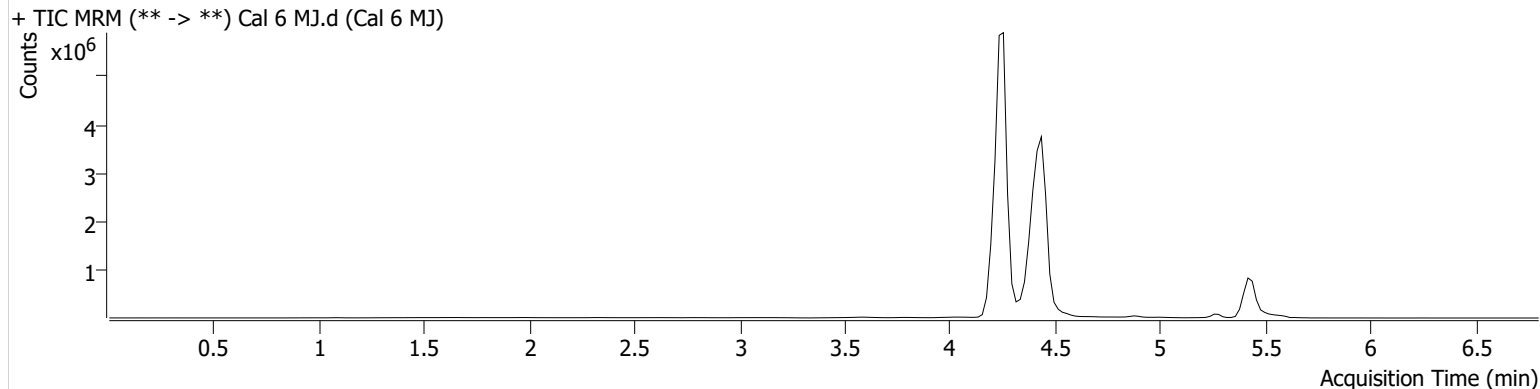


AM #26 Cannabinoids Screen Results

Batch results G:\TOX\Pocatello\Falco\2022\AM 25-26\090722 AM 25 26 CS SC\QuantResults\AM 26 CS.batch.bin
Calibration Last Update 9/8/2022 10:35:26 AM

Instrument	Falco (069901)	Data File	Cal 6 MJ.d
Type	Cal	Sample	Cal 6 MJ
Acq. Method	AM 26 THC.m	Operator	Celena Shrum
Sample Position	P1-F1	Comment	
Injection Volume	10		
Acq. Date-Time	9/7/2022 11:34:52 PM		

Sample Chromatogram



Name	RT	Resp.	ISTD Resp.	Final Conc.
THC	5.449	112848	288170	50.7696 ng/ml
THC-COOH	4.436	5399313	4723909	103.7779 ng/ml
THC-OH	4.262	1129005	14059946	49.8885 ng/ml

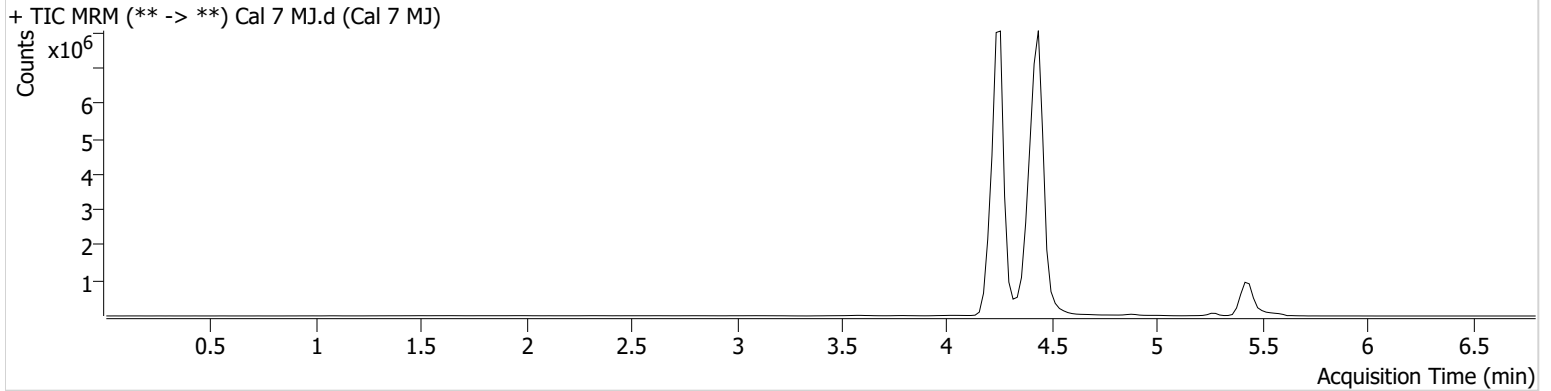
AM #26 Cannabinoids Screen Results



Batch results G:\TOX\Pocatello\Falco\2022\AM 25-26\090722 AM 25 26 CS SC\QuantResults\AM 26 CS.batch.bin
Calibration Last Update 9/8/2022 10:35:26 AM

Instrument	Falco (069901)	Data File	Cal 7 MJ.d
Type	Cal	Sample	Cal 7 MJ
Acq. Method	AM 26 THC.m	Operator	Celena Shrum
Sample Position	P1-G1	Comment	
Injection Volume	10		
Acq. Date-Time	9/7/2022 11:42:26 PM		
Sample Info.			

Sample Chromatogram



Name	RT	Resp.	ISTD Resp.	Final Conc.
THC	5.449	184257	236255	100.8181 ng/ml
THC-COOH	4.436	12180540	4560605	244.1381 ng/ml
THC-OH	4.262	2189523	13425528	101.1673 ng/ml